

## Park Avenue COLLECTION®



Fully-upholstered sofa, love seat and arm chair provide exceptional comfort that will invite your guests to stay awhile. Painted legs and a variety of stylish upholstery choices provide you with attractive guest seating to complement any decor.

Made exclusively for The HON Company by Flexsteel®.

- Contemporary styling with a slightly arched back.
- Plush, individual seat cushions feature high-resiliency foam and are reversible – can be flipped for better wear.
- Painted legs: Black or Titanium.
- Fully upholstered outer back.
- Covered by The HON® Limited Lifetime Warranty.

### Fabric Selections: Grade III

#### Confetti - AB

Black 10



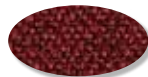
Gray 12



Blue 90



Burgundy 62



#### Curfew - BW

Iron 19



Navy 90



Claret 69



#### Encore - BE

Raven 11



Oatmeal 16



Lava 19



Honeysuckle 26



Henna 42



Mulberry 56



Wild Rose 62



Reef 72



Lapis 83



#### Prisma - BP

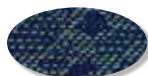
Iron 19



Claret 69



Persian 72

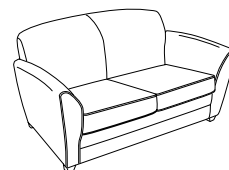


Bluestone 90



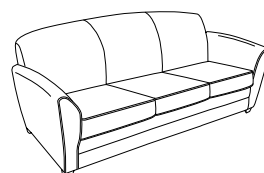
#### (A) SOPAA01

Arm Chair  
32"W x 35½"D x 35"H  
Grade III  
List \$1399



#### (B) SOPAL02

Love Seat\*  
58½"W x 35½"D x 35"H  
Grade III  
List \$1849



#### (C) SOPAS03

Sofa  
78½"W x 35½"D x 35"H  
Grade III  
List \$2299

\*Not shown

SO = Special Order

All items on this page available by Special Order.